

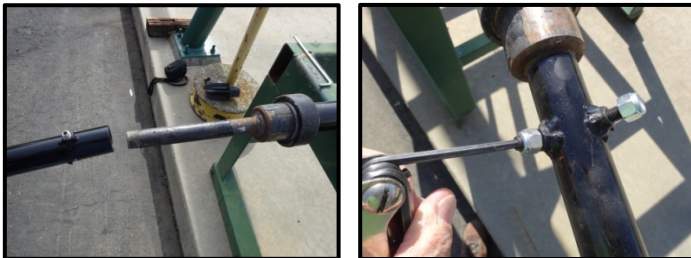
Sno-Post™ Boundary Marker Placement Instructions

SYSTEM TOOLS & MATERIALS

- Safe-Hit SHTOL-30-6-X Driver Tool PN 607948B
- Guide Collar Tool (fits on SHTOL-30-6-X) PN 619305B
- Plastic Anchor PN 619297B
- Sno-Post™ Boundary Marker PN Varies
- Tie Wrap (included w/system) PN 117784B

ALTERNATE FASTENING OPTIONS (Step 5)

- Stainless Steel Roll Pin PN 116318G
- Galvanized Steel Roll Pin PN 116319B
- Plastic Rivets (2) PN 118784B
- Bolt Kit, Stainless Steel PN 619272B
- Bolt Kit, Zinc Plated PN 619271B



Step 1: Place the guide collar tool on the end of the Safe-Hit SHTOL-30-6-X manual driver tool stem. Tighten the two set screws and then secure with the locking nuts.



Step 2: Place the plastic anchor into the canister as shown.



Step 3: Stand the driver tool upright, remove the pin at the top of the tool and then begin driving the anchor into the ground.



Step 4: Drive the anchor down until the depth ring is flush with grade.



Step 5: Place the delineator tube on the anchor. Align holes to insert and secure selected fastener (tie wrap shown above).



Completed marker.

IT IS THE RESPONSIBILITY OF THE INSTALLER TO MAINTAIN A SAFE WORK AREA INCLUDING THE USE OF STANDARD WORK ZONE SAFETY EQUIPMENT & PPE: GLOVES, SAFETY-TOE SHOES, EYE & EAR PROTECTION